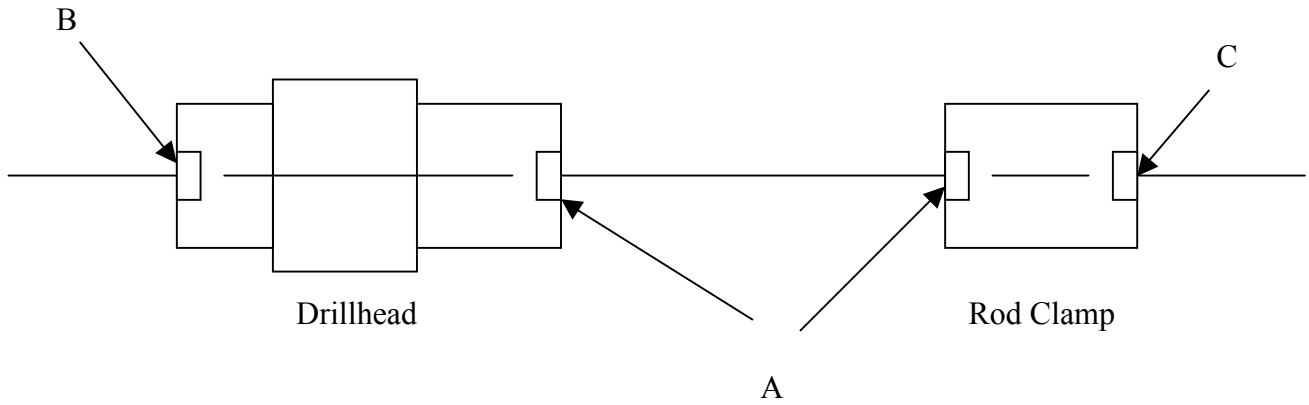


## Jaw Sets and Bushings Chart



### Standard Chuck and Clamp Assemblies

	Jaw Set *	Chuck Bushing (A)	Spindle Bushing (B)	Clamp Bushing (C)
B Rod	18100012	18100068	18100186	18100203
N Rod	18100135	18100153	18100187	18100205
B Casing	18100134	18100206	18100188	18100204
H Rod / N Casing	18100145	18100154	none	18100383

\* Each jaw set requires 2 – 18100194 Jaw Retaining Rings and 18 – 18150003 Carbide Inserts

### “P” Clamp Assemblies

	Jaw Set *	Clamp Bushing (A and C)
B Rod	18100174	18100180
N Rod	18100176	18100182
B Casing	18100175	18100181
H Rod / N Casing	18100177	18100184
P Rod / H Casing	18100178 **	18100185

\* Each jaw set (except P Rod) requires 2 – 18100208 Jaw Retaining Rings and 18 – 18150003 Carbide Inserts

\*\*P Rod jaw set requires 1 – 18100209 and 1 – 18100484 Jaw Retaining Ring

2 clamp bushings are required per rod clamp assembly

### “P” Chuck Assemblies

	Jaw Set *	Chuck Bushing (A)
B Rod	18100481	18100481
N Rod	18100475	18100478
H Rod / N Casing	18100476	18100479
P Rod / H Casing	18100477	18100480

\* Each jaw set requires 2 – 18100483 Jaw Retaining Rings and 18 – 18150003 Carbide Inserts